



---

**CHAINWINDER** | AWNING  
WINDOW OPERATORS

## DS1 | CHAINWINDER

# The DS1 is Australia's market leading awning window winder.

Delivering a solution to the growing trend of awning openings, this revolutionary product is the ultimate in window control and has changed the way in which awning windows are specified.

Being the industry leader, the DS1 Chainwinder allows for easy operation and installation in a secure key lockable configuration. Combined with a stylish and easy to use slim fold down lever, this product delivers ultimate window control.

Designed for Residential and Commercial settings where awning openings are often found. The DS1 Chainwinder can be pre-restricted to provide a restricted window opening to make a safer environment.

## ADVANTAGES



Window restrictable with an easy chain restrictor switch



EasyLink - Removable chain from sash plate for easy and reduced installation time



Smooth, effortless operation and control for large awning openings



Fold down lever with adjustable spline

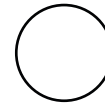
## TESTING

- Neutral Salt and Spray tested in accordance with AS2331. 3.1 2006
- Cycle tested on a 30kg window to over 30,000 cycles
- Tested and surpassed chain pull test achieving 3403.9N (standard 250N)

## COLOURS



BLACK



WHITE



SILVER



CUSTOM COLOURS ON REQUEST

## PRODUCT DETAILS

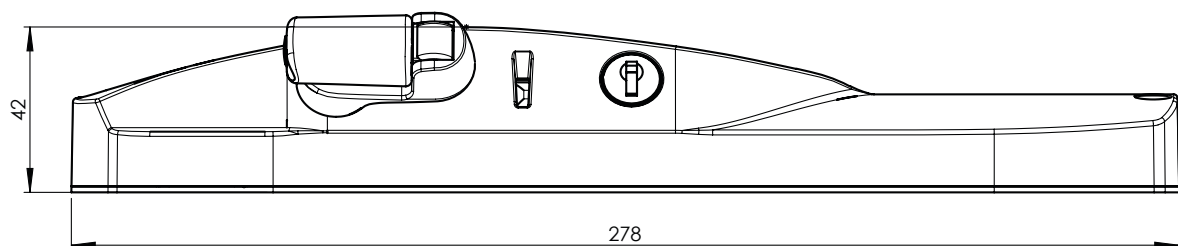
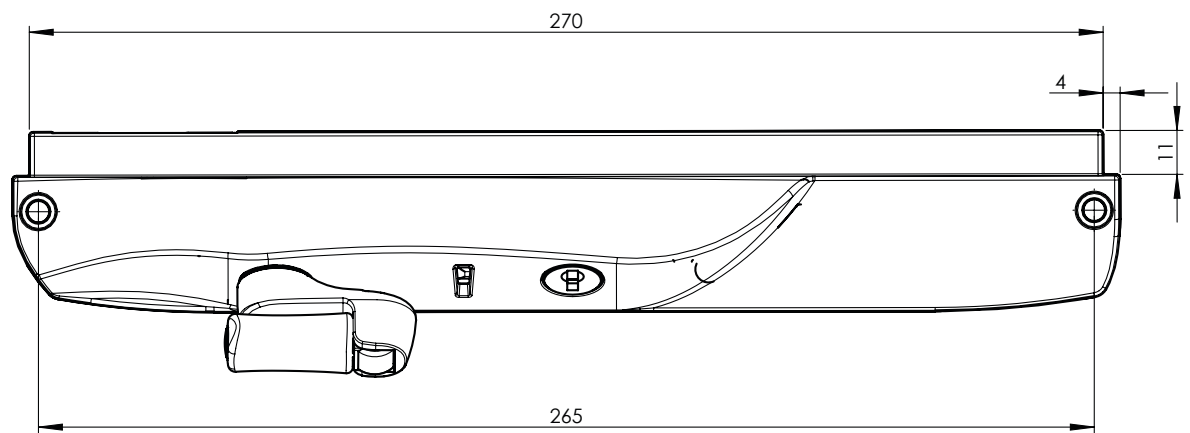
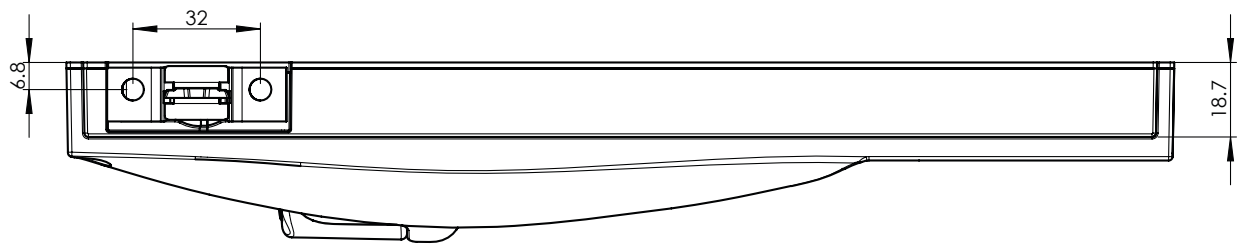
|                           |   |
|---------------------------|---|
| <b>FURNITURE MATERIAL</b> | Polesium™ Base & Housing, Zinc Handle and Stainless steel Chain |
| <b>FINISH AVAILABLE</b>   | Powder coat   |
| <b>CYLINDER</b>           | DS125 - 5 Disc wafer cylinder<br>DS126 - 6 Disc wafer cylinder  |
| <b>KEYING</b>             | Keyed alike or keyed to differ                                  |

## HOW TO ORDER

| CODE          | COLOUR                 | CYLINDER       |
|---------------|------------------------|----------------|
| DS1 Keyed     | Black, White or Silver | DS125 or DS126 |
| DS2 Non-Keyed | Black, White or Silver | —              |

## ADDITIONAL

| CODE    | PRODUCT                       |
|---------|-------------------------------|
| 9049270 | DS1 Chainwinder packer - 3mm  |
| MDS174N | DS1 Chainwinder packer - 8mm  |
| MDS1176 | DS1 Chainwinder packer - 20mm |



## DN400 | TWIN CHAINWINDER

# The Twin Chainwinder is the ultimate window control for large awning windows.

Delivering a solution to the growing trend of large awning openings, this revolutionary product is the ultimate in window control and is sure to change the way in which awning windows are specified.

Following on from our industry leader the DS1 Chainwinder, the Twin Chainwinder allows for easy operation and installation in a secure key lockable configuration. Combined with a stylish and easy to use slim fold down lever, this product delivers ultimate window control.

Designed for Residential and Commercial settings where large awning openings are often found. The DN400 Twin Chainwinder can be pre-restricted and is suitable for use in highrise construction.

## ADVANTAGES



Window restrictable with an easy chain restrictor switch



Chain Secure - Removable chain from sash plate component aids and assists in installation and cleaning



Supplied with a Stainless steel chain



Smooth, effortless operation and control for large awning openings

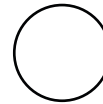
## TESTING

- Tested and surpassed Neutral Salt Spray testing in accordance with AS2331. 3.1
- Tested and surpassed over 5000 pascals of negative pressure
- The DN400 does not have a weight or load rating, though when used in conjunction with the Doric Heavy Duty Stainless steel stays or any continuous hinge framing system, will easily operate within a sash up to and beyond 100kg.

## COLOURS



SATIN BLACK



PEARL WHITE



MATTE SILVER



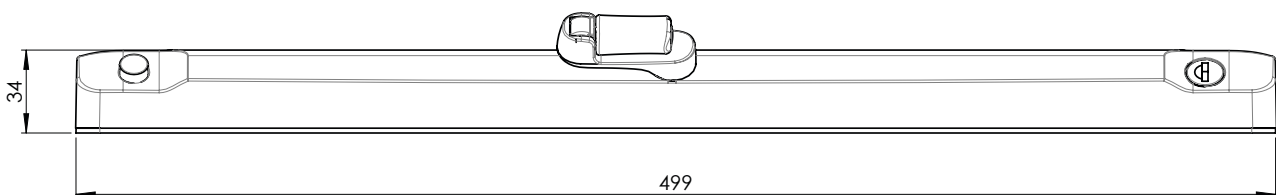
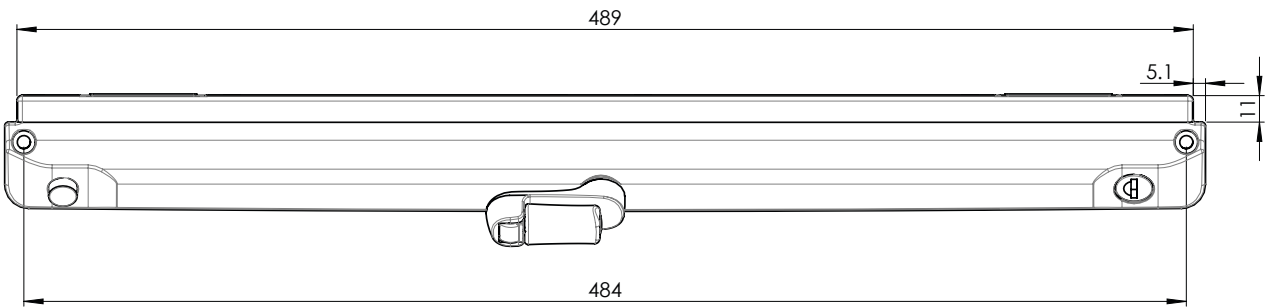
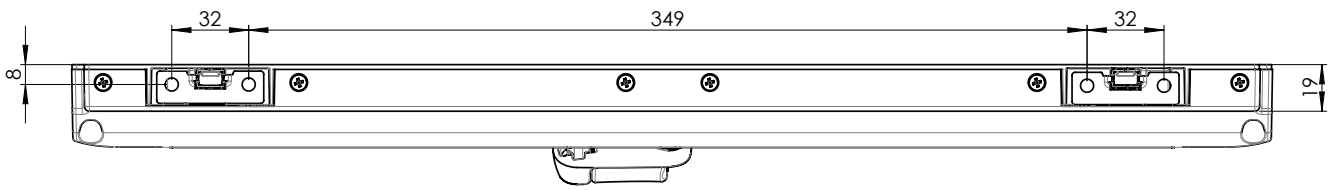
CUSTOM COLOURS ON REQUEST

## PRODUCT DETAILS

|                           |  |
|---------------------------|--|
| <b>FURNITURE MATERIAL</b> | Die Cast Zinc,<br>Stainless steel Chain  |
| <b>FINISH AVAILABLE</b>   | Powder coat  |
| <b>CYLINDER</b>           | DS94 - 6 Disc wafer cylinder<br>DS187 - C4 pin cylinder<br><br>* note: DS94 can be keyed alike to DS126 cylinder |

## HOW TO ORDER

| CODE                 | COLOUR                 | CYLINDER      |
|----------------------|------------------------|---------------|
| DN400 Keyed          | Black, White or Silver | DS94 or DS187 |
| DN402 Non Keyed      | Black, White or Silver | —             |
| DN404 Pre-restricted | Black, White or Silver | DS94 or DS187 |





---

**WINDOW**  
RESTRICTION COMPLIANT

---

**SMOOTH**  
EFFORTLESS OPERATION  
FOR AWNING OPENINGS

---

**STYLISH**  
AND EASY TO USE LARGE  
FOLD DOWN LEVER

## DS1 | CHAINWINDER



The most durable  
single window winder  
in the market

[doric.com.au/ds1-chainwinder/](http://doric.com.au/ds1-chainwinder/)



---

**WINDOW**  
RESTRICTION COMPLIANT

---

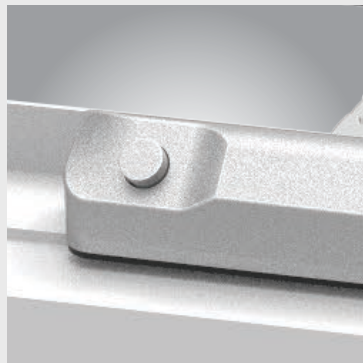
**SMOOTH**  
EFFORTLESS OPERATION  
FOR LARGE AWNING  
OPENINGS

---

**STYLISH**  
AND EASY TO USE LARGE  
FOLD DOWN LEVER

---

## **DN400** | TWIN CHAINWINDER



the ultimate  
window  
**control**

[doric.com.au/DN400-Twin-Chainwinder](http://doric.com.au/DN400-Twin-Chainwinder)

# INNOVATORS

OF HARDWARE FOR WINDOWS AND DOORS

---

CHAINWINDERS\_DAP.v1.1-07.05.2020

## **SYDNEY**

38 Redfern St,  
Wetherill Park  
Sydney, NSW 2164  
Australia  
Ph: +61 2 9609 2555  
[www.doric.com.au](http://www.doric.com.au)

## **AUCKLAND**

26/C Triton Drive,  
Albany, North Shore,  
New Zealand 0632  
Auckland  
Ph: +64 9 415 5535  
[www.doricnz.co.nz](http://www.doricnz.co.nz)

## **KUALA LUMPUR**

No.17 Jalan 51/203A,  
Kawasan Perindustrian Tiong Nam,  
Seksyen 51, 46050 Petaling Jaya,  
Selangor, Malaysia  
Ph: +603 777 33 628  
[www.doric.com.my](http://www.doric.com.my)



---

**CHAINWINDER** | AWNING WINDOW OPERATORS